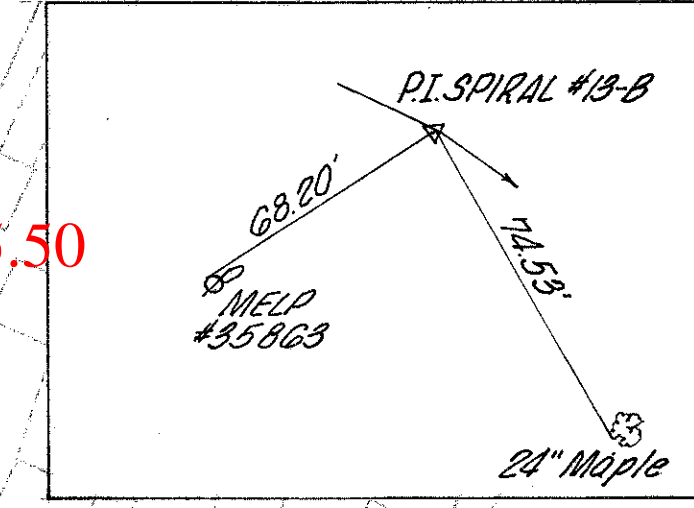
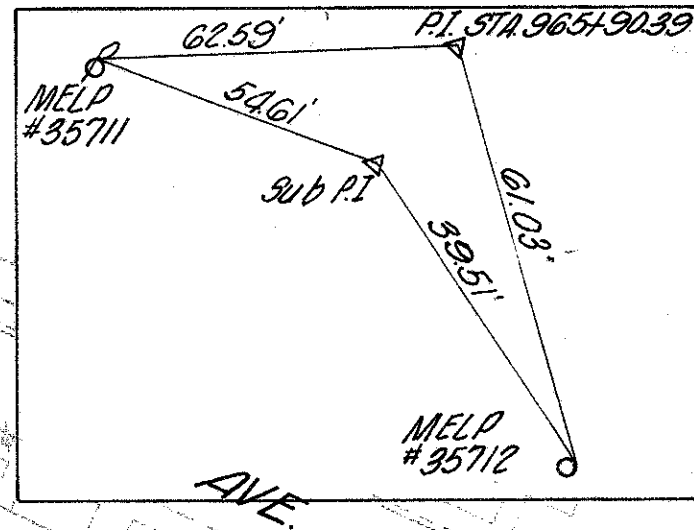


CUYAHOGA COUNTY
CUY-71-15.06



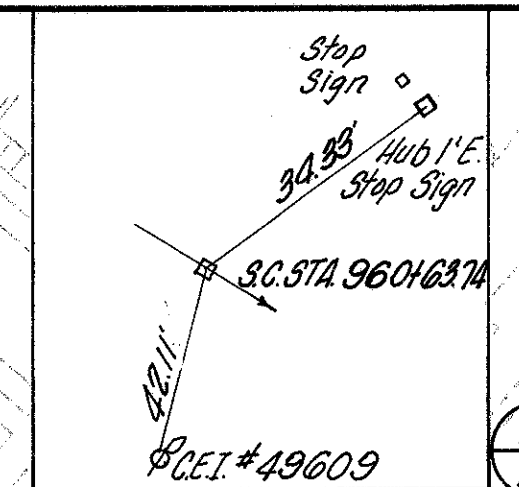
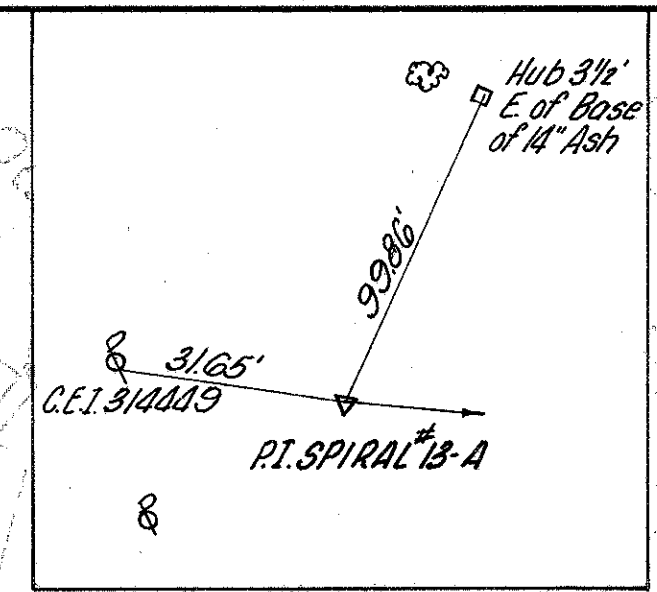
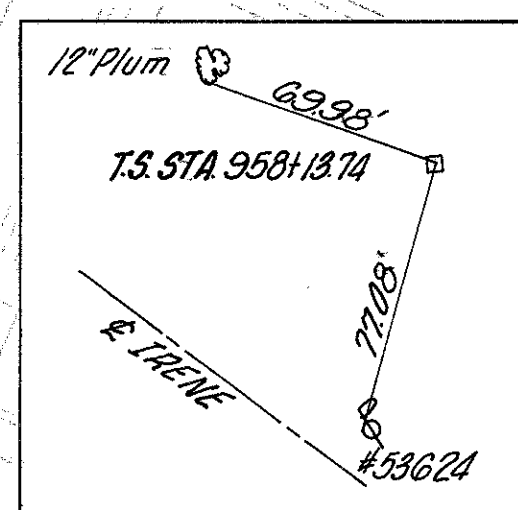
CURVE

CURVE

DATA

NO. 13

PI STA	965+90.39	Ls	250.00'
Δ	25°50'00" RT.	Θ	02°30'00"
Δc	20°50'00" RT.	P	0.91'
Dc	02°00'00"	K	124.99'
Rc	2864.79'	L.T.	100.68'
Tc	520.65'	S.T.	83.35'
Lc	1041.67'	Ts	782.20'
Ec	48.01'	Es	75.30'



SIGN 161, STA. 16+61 RT.
SEE DETAIL 5, SHT. NO 306

HODGSON

ROT STA 15+86.75 FULTON RD =
ROT STA 965+40.11 LINE "A"

FULTON RD
SLM 16.79 = MM 245.50

BENCH MARK #58
Spike in Anchor Pole
S.E. Cor. Leading & Fulton
104' Lt. of Sta. 963+25
Elev. 103.36

STRUCTURE NO 2
CUY-I-71-1646

NOTES:
1-G THROUGH 12-C; REMOVE CONCRETE DRIVE
APPROACH AND FILL BETWEEN CURB ENDS WITH
SANDSTONE CURB THAT HAS BEEN REMOVED
FOR RESET.

FOR RIVERSIDE & LEADING AVES. TURN-
AROUND DETAILS - SEE SHEET NO. 218.
FOR FULTON RD. PLAN -
SEE SHEET NO. 193 TO 197.
FOR FULTON RD. CROSS SECTIONS -
SEE SHEET NO. 200 TO 205.
FOR CUL-DE-SAC DETAILS -
SEE SHEET NO. 216.

FOR PROFILE -
SEE SHEET NO. 54.
FOR ESTIMATED QUANTITIES -
SEE SHEET NO. 42.
FOR REMOVAL ITEMS -
SEE SHEET NO. 27.
FOR DRAINAGE PLAN -
SEE SHEET NO. 222.